

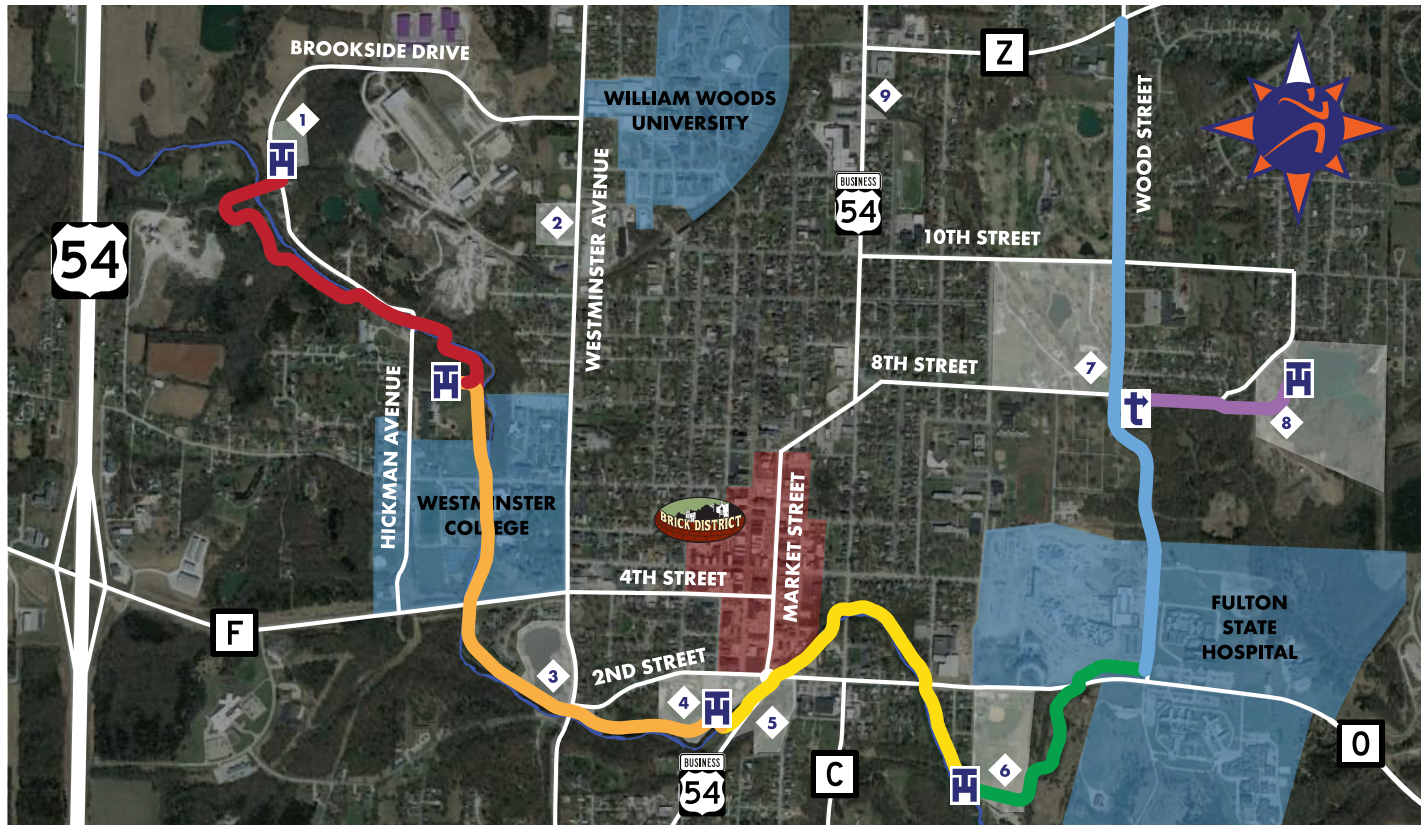


# TRAIL MAP

OPENED: 2000

TOTAL LENGTH: 4.77 MILES

maintained by Fulton Parks and Recreation



**TRAILHEAD**



**TRAIL SPUR**

## PARK LOCATIONS

- 1 FULTON DOG PARK
- 2 CARVER PARK
- 3 TRUMAN PARK
- 4 MEMORIAL PARK
- 5 HOCKADAY PARK
- 6 SEAMAN PARK
- 7 VETERANS PARK
- 8 MORNINGSIDE PARK
- 9 SMITH BRANCH PARK

## TRAIL STAGE MILEAGE

<b>I</b>	0.83 miles	<b>II</b>	1.05 miles	<b>III</b>	0.77 miles	<b>IV</b>	0.53 miles	<b>V</b>	1.22 miles	<b>VI</b>	0.37 miles
----------	------------	-----------	------------	------------	------------	-----------	------------	----------	------------	-----------	------------